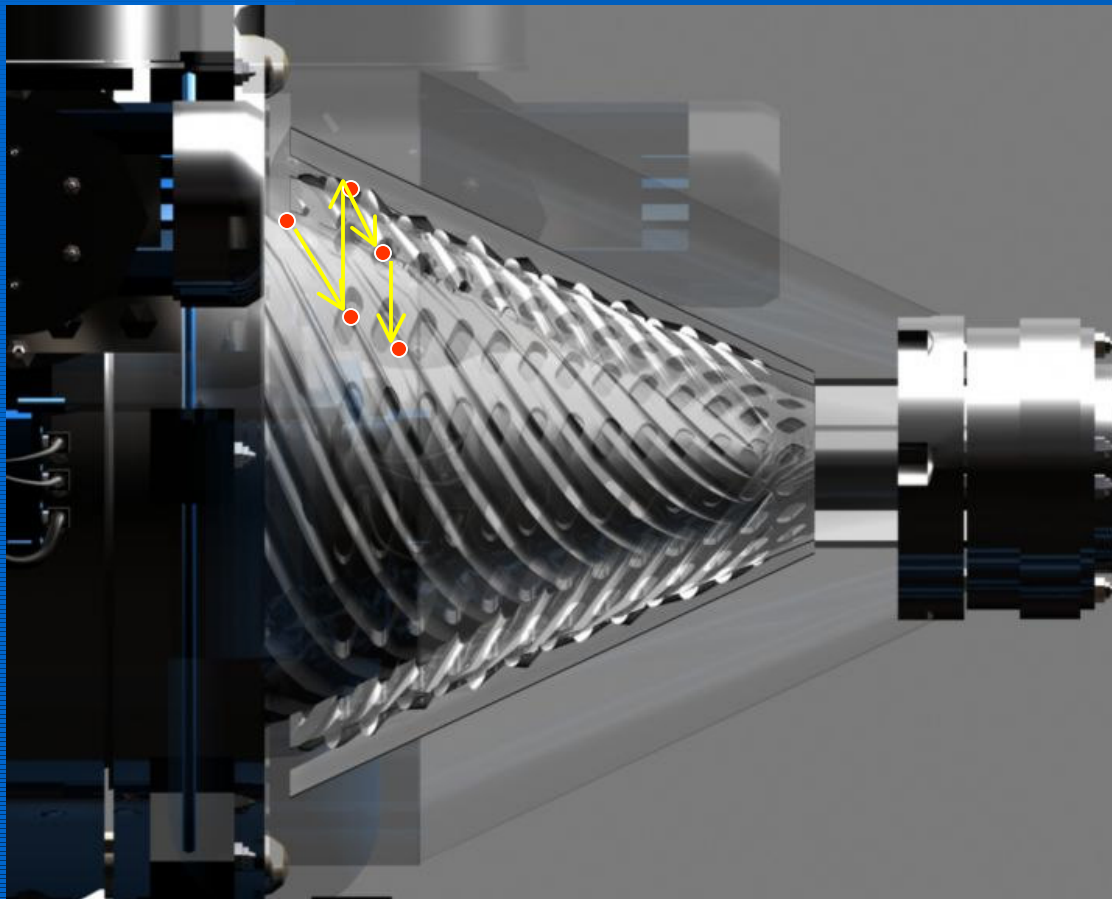


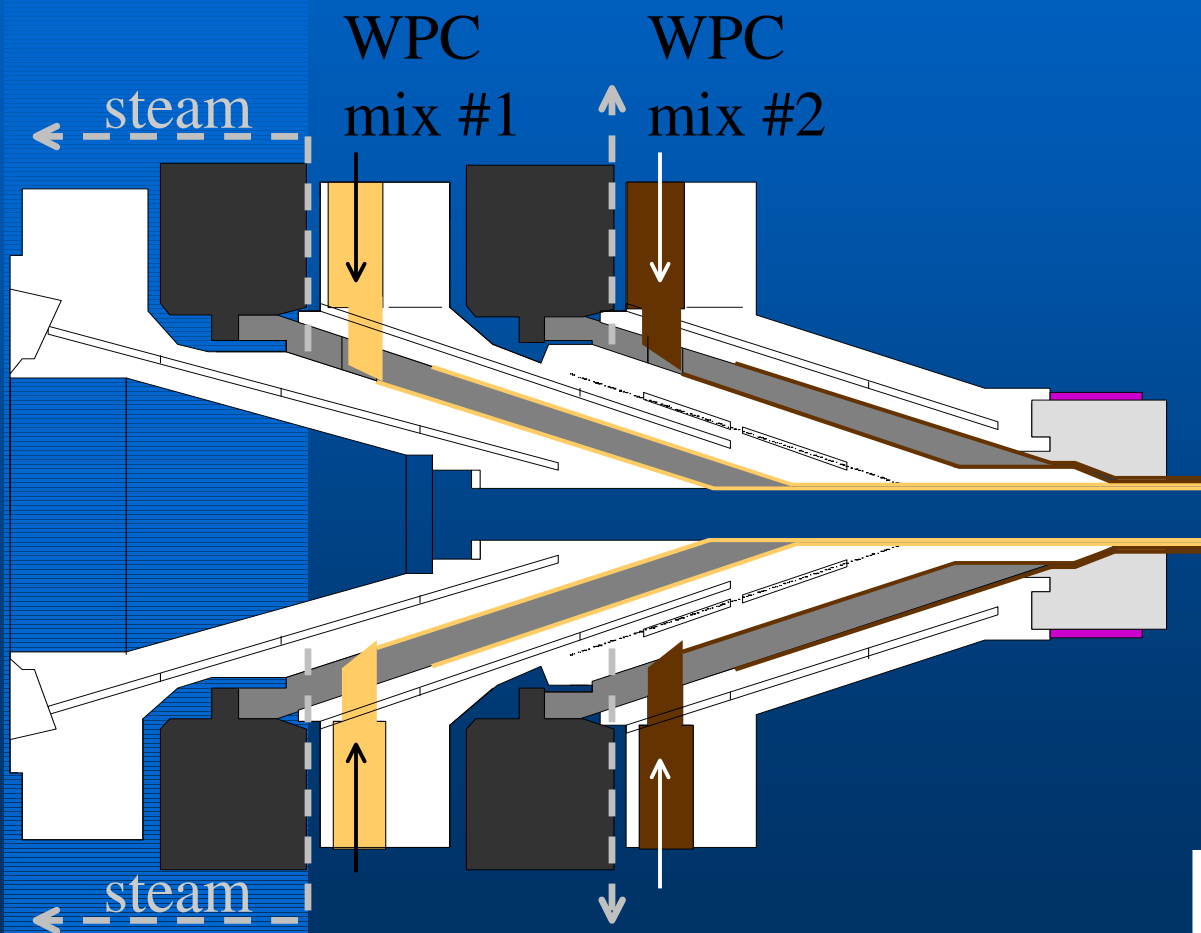
# Particle routing from-and-to two stators



- Step 1: entry into inner stator groove n.o 1 and travel until rotor hole row 1
- Step 2: rotor hole transport until outer stator groove n.o 1
- Step 3: entry into outer stator groove n.o 1 and travel until rotor hole row 2
- Step 4: rotor hole transport into inner stator groove n.o 2
- Steps 1 to 4 repeated multiple times and each time the flow enters or leaves the rotor hole, it becomes sharply cut



## 2-rotor *CWE* – Stacked Mode



✓ For dry, semi-dry and semi-wet materials

- WPC-material mix #1 fed to rear rotor
- WPC-material mix #2 fed to front rotor
- Released steam ejected from both rotors
- Melt 2 encapsulates melt 1 inside the extruder/die and
- Simple die gives profile/board its form

 **CONENOR**